

> CIGRE

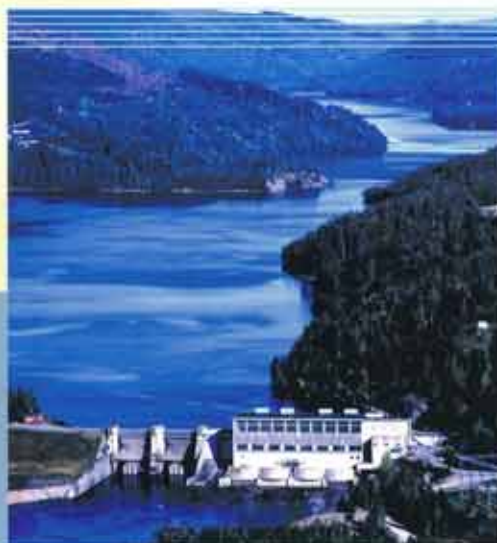
International
Council
on Large
Electric
Systems

CIGRE (International Council on Large Electric Systems) is a permanent international, non government, non-profit-making Association, founded in France, in 1921.

Its aim is to develop and distribute technical knowledge in the field of the generation and transmission of high voltage electricity.

With members in over 80 countries, CIGRE is the worldwide forum that unites all the key partners, research workers, academics, producers, manufacturers, system operators, traders, and regulatory bodies, bringing together technical innovation, requirements and operators' experience.

CIGRE deals with all the main themes of the field of electricity, i.e. organisation of utilities, development and adaptation of grids, optimisation of maintenance and life expectancy of electrical equipment, as well as the analysis of the impact on the environment, etc..



CIGRE's Activities

Technical studies are a permanent activity, for the Study Committees and the Working Groups. The work is the subject of reports that are generally published in the form of synthesising documents, i.e. the "technical brochures".

- **The Biennial Conference**, so-called Plenary Session, is organised every even year in Paris. The reports on predefined themes are debated during the Group Meetings by each of the Study Committees. The general Proceedings are published and made available to the 2500 or so participants.

- **The Symposia** are held on odd years, in a similar manner, but with a more restricted bearing. They focus on a subject of topical interest and are organised upon the National Committee's invitation.
- **The Regional Meetings** dealing with questions that are more specific to a geographical area are held regularly upon the initiative of one or more National Committees, with the contribution of the Study Committees.
- **Local events** are also organised by the National Committees.

CIGRE's Members

There are three categories of members.

- **Individual members** make up most of CIGRE's members, approximately 4000 of the 4700 present members.
- **Legal entities, administrations, scientific and technical organisations, private or public companies** can be "collective" members (type I) of CIGRE.
- **For educational bodies**, such as universities, a "collective" member (type II) status exists, for whom a reduced membership fee is applied.

A World-Wide Audience

CIGRE members are spread out throughout the world, in over 80 countries. Among these countries, fifty are well represented which enables a National Committee to be set up, i.e., a local CIGRE agency, that is essential for its development and operation.

> How to join CIGRE

Send your Membership Application Form to the National Committee of your country or, if there is no National Committee, to the CIGRE Central Office.

For any further information, or for a membership application form, please contact the Central Office, or www.cigre.org



Services for Members

In addition to being able to partake in CIGRE's activities, members benefit from special services :

- The **ELECTRA** journal.
- The **CIGRE membership Directory**, available on CD-ROM, a tool of invaluable assistance in setting up business contacts.
- **Special registration rates** for CIGRE events, the Plenary Session and Symposia.
- **Special price for CIGRE technical documents.**
- **Access to the services of the Central Office**, for research and information.

How the Association Operates

The **General Assembly** of CIGRE members takes place every two years. It is chaired by the President of CIGRE. Decisions are made regarding governance and the general running of the Association, such as the Statutes and membership fees.

The **Administrative Council** is elected by the General Assembly. It counts approximately 50 members representing the National Committees, and runs CIGRE along the lines approved by the General Assembly. Its work is prepared by the **Executive Committee**.

The **Technical Committee** directs and organises the technical activities of CIGRE.

The **Central Office** in Paris, headed by the Secretary General, is in charge of the operational management of the Association and liaises with the National Committees and the organisational structure of CIGRE.

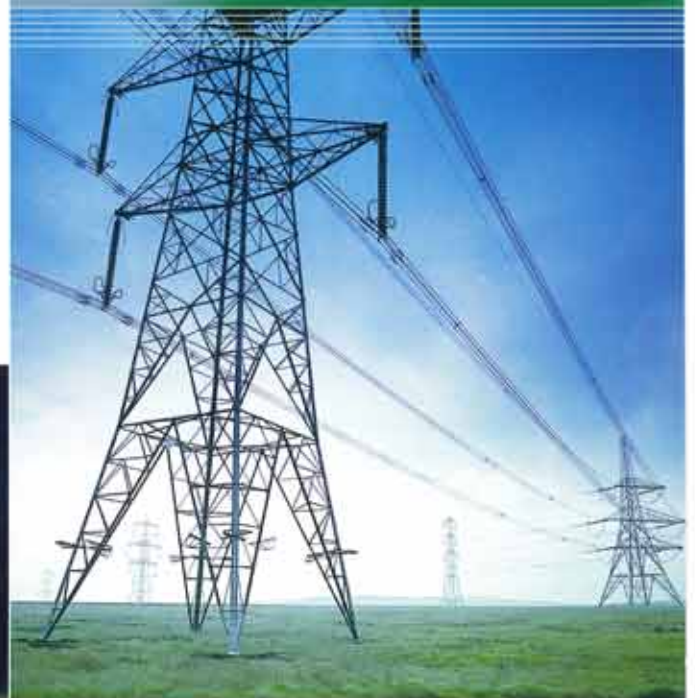
The Study Committees

CIGRE's technical activities are split into 16 fields, each under the responsibility of a Study Committee.

- A1 Rotating Electrical Machines
- A2 Transformers
- A3 High Voltage Equipment
- B1 Insulated Cables
- B2 Overhead Lines
- B3 Substations
- B4 HVDC and Power Electronics
- B5 Protections and Automations
- C1 System Development and Economics
- C2 System Control and Operation
- C3 System Environmental Performance
- C4 System Technical Performance
- C5 Electricity Markets and Regulation
- C6 Distribution Systems and Dispersed Generation
- D1 Materials and Emerging Technologies
- D2 Information Systems and Telecommunications

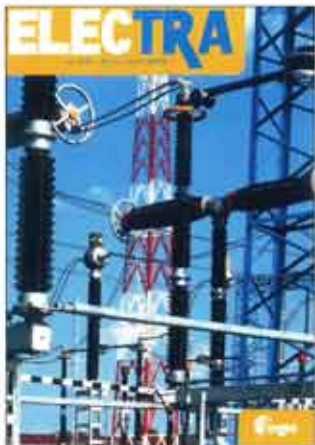
The **Study Committee** co-ordinates the studies of its field, whereas all the Study Committees are co-ordinated by the **Technical Committee**.

Approximately 200 Working Groups are constantly operating, grouping together over 2000 experts.



Publications

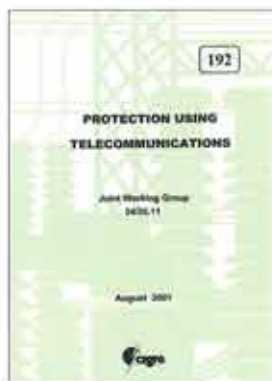
CIGRE's technical information, available on paper, CD-ROM or in electronic format is accessible as the case may be, to CIGRE members, or to anyone, free of charge, or against payment.



< **ELECTRA** is a bimonthly journal, reserved for CIGRE members. It provides information on the progress of the technical activities as well as their chief results, the life of the Association, and events organised by CIGRE or the National Committees. Advertising space is available for members.



< **The reports** that are presented and discussed in the Sessions and Symposia are edited, as well as the **Proceedings**.



< **The "technical brochures"** are publications, based on the work of the Study Committees and provide a synthesising paper on a specific subject. Over 200 technical brochures have been published to date.



< **The CIGRE membership directory.**

Moreover, other documents are published, in a less systematic manner.

www.cigre.org

www.cigre.org is CIGRE's web site. It provides information on the Association, its activities and the events organised.

www.e-cigre.org allows you to consult the directory of the documentation available at CIGRE, as well as to order or download a particular document.

The Study Committees also have their own site, as do most of the National Committees.

Contact us at the Central Office

Secretary-General : secretary-general@cigre.org

Electra, brochures : catherine.ott@cigre.org

Web, advertising : communication-web@cigre.org

Reports : sessionpapers@cigre.org

Sales, conferences : christine.poljakovic@cigre.org

Members : francoise.maupetit@cigre.org

Finance : marie-christine.gracia@cigre.org

Registration for sessions : registrations@cigre.org



CIGRE • 21 rue d'Artois • F 75008 Paris

Tél. : + 33 (0) 1 53 89 12 90 • **Fax** : + 33 (0) 1 53 89 12 99

Internet : <http://www.cigre.org>