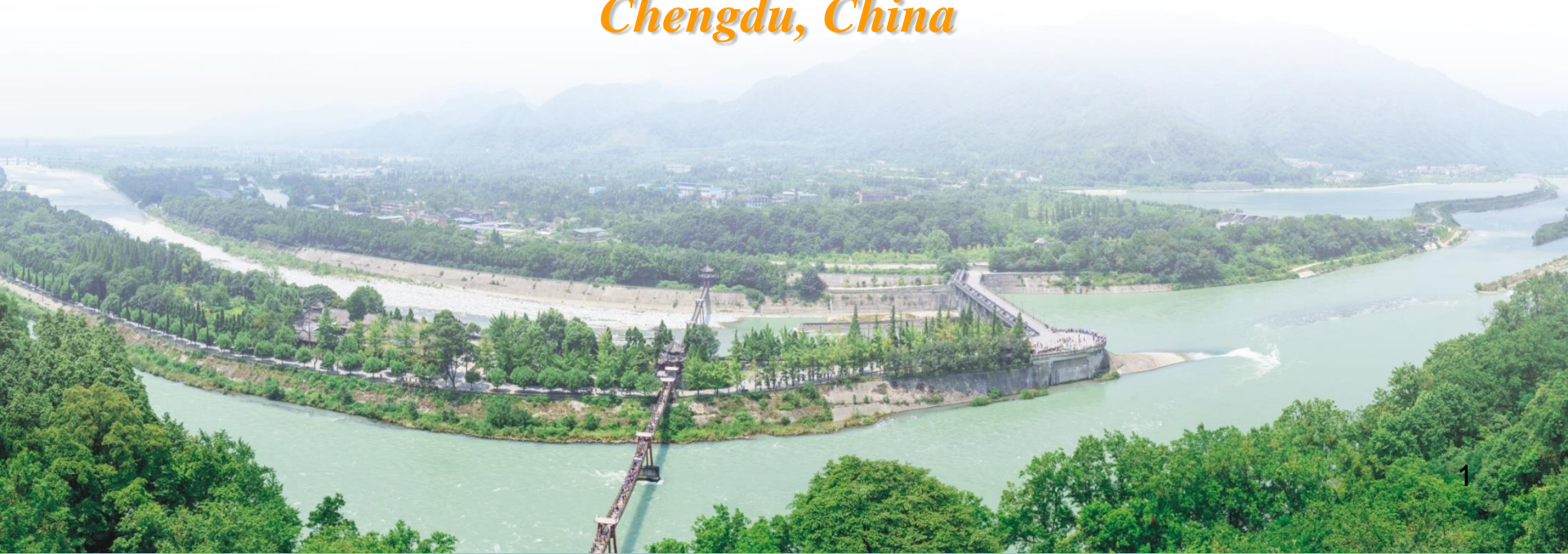


# ***CHENGDU SYMPOSIUM 2019***

***September 20-25, 2019***

***Chengdu, China***



# About Chengdu Symposium 2019

*Towards active, sustainable digital networks that are resilient and integrated from UHV to distribution*

## Date and Place

- 20-25 September 2019, Chengdu, China

## CIGRE Study Committees involved

- B3: Substations and Electrical Installations (lead)
- C6: Active Distribution Systems and Dispersed Energy Resources (lead)
- B5: Protection and Control
- C1: Power System Development and Economics
- C3: System Environment Performance
- D2: Information Systems and Telecommunication

## Important dates

- Start of call for papers: 10 September 2018
- Receipt of synopsis: 08 January 2019 (NEW)
- Notification of acceptance: 25 January 2019 (NEW)
- Receipt of full paper: 30 June 2019



# Preferential Subjects

## **PS1 – Planning for a future sustainable grid**

- Global experience and economics of major interconnections
- Transmission and distribution grid planning scenarios for de-carbonization scenarios
- Managing grid congestion
- Planning for electrification of heating, cooling and transport applications and uncertain load shape
- Metropolitan network planning methods
- Evolving DC network options for different voltage levels
- Planning of wide-area protection and automation systems

## **PS2 – Integrating distributed energy resources to build a sustainable future and integrating renewable**

- Distributed renewable and dispersed energy solutions, application and integration
- Microgrid solutions, application and integration
- Designing the grid of the future in a more sustainable environment
- Experience with total life cycle asset management across all voltage levels
- Impacts of distributed energy resources on protection and automation
- Using asset analytics tools to improve asset management

# Preferential Subjects

## PS3 – Technology solutions for a future sustainable power system

- Smarter substation technologies and applications
- Distribution substations and new technologies
- Smart communications, protection and automation
- Cyber-security in the future network
- Global experience and prospects for UHV and superconducting cables
- Digital substations and the Internet of Things (IOT)
- Load control (both direct and indirect), demand integration, customer flexibility and storage technologies





# Schedule

Date	Time	Event	Venue
Fri.-Sat., Sep. 20-21	AM PM	WG Meetings	Intercontinental Century City Chengdu
Sun., Sep. 22	AM PM	WG Meetings	Intercontinental Century City Chengdu
	AM PM	Technical Visit	500kV Tanjiawan Substation & Zipingpu Hydropower Station
	Evening	Welcome Cocktail	Intercontinental Century City Chengdu
Mon., Sep. 23	AM	Opening Plenary	Intercontinental Century City Chengdu
	PM	PS1	Intercontinental Century City Chengdu
	Evening	Gala Dinner	Intercontinental Century City Chengdu

# Schedule

Date	Time	Event	Venue
Tue., Sep.24	AM	PS2	Intercontinental Century City Chengdu
	PM	PS3	Intercontinental Century City Chengdu
	Evening	Social Events	Intercontinental Century City Chengdu
Wed., Sep.25	AM	Tutorial	Intercontinental Century City Chengdu
	PM	Tutorial	Intercontinental Century City Chengdu
	Evening	SC Dinner	Intercontinental Century City Chengdu
Thu., Sep.26	AM	SC Meetings	Intercontinental Century City Chengdu
	PM	SC Meetings	Intercontinental Century City Chengdu
Fri.-Sat., Sep. 27 : <b>Pending</b>	AM PM	WG Meetings	Intercontinental Century City Chengdu

# Venue

Chengdu 2019 will be held at **Intercontinental Century City Chengdu**.  
Address: 88, Century City Boulevard, Chengdu, Sichuan Province, P.R.China  
Tel: +86 28 8534 9999 Fax: +86 28 8538 0523  
**Website: [www.intercontinental.com](http://www.intercontinental.com)**



The InterContinental Century City Chengdu is located in the city's High-Tech Development Zone, 20 minutes' drive from Shuangliu Airport and 40 minutes from the railway station. The hotel is also convenient to major area attractions and downtown shopping plazas.

**To the airport: 19km**

**To the railway station: 40km**

**To downtown: 15km**

# Technical Visit

## Zipingpu Hydropower Station



Located at the upper reach of Min River in Northwest Chengdu, Sichuan Province, (9km away from Dujiangyan City), Zipingpu Hydropower Station is a large hydraulic project primarily for irrigation and water supply with a combination of power generation, flood prevention and sightseeing functions. It has an installed capacity of 760MW, an annual power generation of 3.417TWh and an annual utilization hours of 4496h.



# Technical Visit

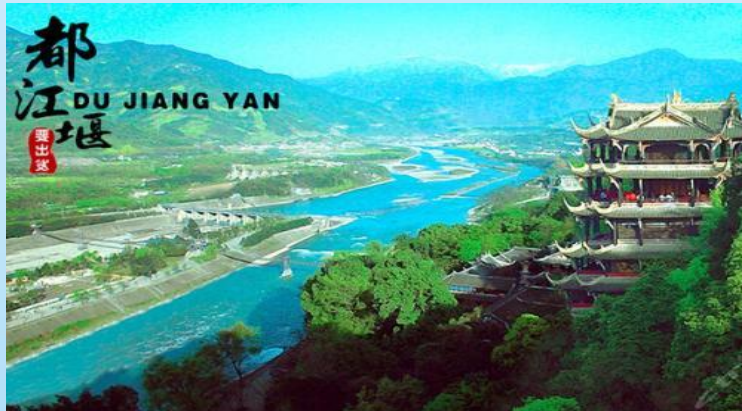
## 500kV Tanjiawan Substation

500kV Tanjiawan Substation, with an area of about 7.3 hectares, is located in Luojiang County, about 22km away from Deyang City to the south. Put into operation in March, 2010, this substation enables Sichuan Grid to interconnect with Northwest Grid and achieve the supplement between hydropower and thermal power. Meanwhile, it marks the end of power supply rations of Deyang in the dry season for 9 consecutive years.



# Attractions of Chengdu

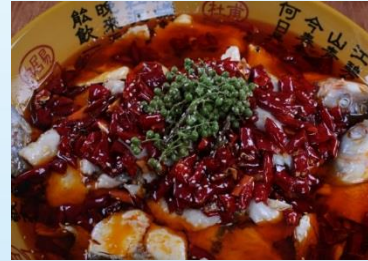
As one of the most famous historical and cultural cities of China, Chengdu is said to be “a city that you will never want to leave once you come”. It offers a great variety of attractions, entertainment and lifestyles.



Chengdu has plenty of world natural and cultural heritages such as Qingcheng Mountain, Dujiangyan Irrigation Project, Panda Research Base, and a great number of scenic spots such as Wuhou Temple, Dufu Thatched Cottage, Jinsha Site Museum, Xiling Snow Mountain, etc.

# Food of Chengdu

Chengdu cuisine consists of Sichuan food, snack food and hot pot. Sichuan food is one of China's four schools of food. It has more than 3,000 dishes, many of which are famous worldwide. Characterized by its spicy and pungent flavor, Sichuan cuisine, prolific of tastes, emphasizes on the use of chili.



Chengdu Snacks are famous for its tiny and exquisite look, such as “Zhong Dumplings”, “Steam Dumplings Wrapped in Leaves”, “Dandan Noodles”, etc. At present, hotpot is not only a globally recognized symbol of China, it's also an eye-catching urban landscape that displays the hotpot complex of Chengdunese.



## Access from the airport to the hotel

### By taxi

Approx. 30 min's drive to Holiday Inn (without traffic jams) with a ¥40 fare.

Pick-up Points: Terminal 1: Outside Gate 2 of the arrival hall; Terminal 2: Outside Gates 4 and 5 of the arrival hall.

### By Metro

Line 10 (Bound for Taipingyuan)  
Taipingyuan -> Line 7 (Outer ring) South Railway Station  
-> Line 1 (Bound for Science City) Century City Exit A -> 1km's walk to the Hotel.  
55min, ¥6.





## Access from the airport to the hotel

## By Airport Bus No.4



Take off at the stop of Century City Metro Station; walk about 1km to the Hotel. The whole process would take about 70min.

## Airport Bus No.4 (8:30-19:30)

1. Pick-up: Gate 1 of Terminal 1;  
50m away from Gate 5 of  
Terminal 2;

### 3. Major Stops: Chengdu Airport, Metro Station of International Convention and Exhibition Center of New Century City, Huayang Bus Station

*Thanks & Welcome !*